
Prescott High School



Course Pathways Presentation



Course Pathway

- These pathways are just a guideline for students, parents, and academic advisors.
 - Reasons to differentiate:
 - Failing/Low Grades
 - AP classes are all inclusive (no entrance guidelines)
 - Students want more challenging curriculum
 - Individual choice/preferences
-

AP vs. Dual Enrollment

Which program is right for you?



- Both programs put you on the path to earning credits towards a college degree while in high school.
 - Your selection should be based on your: academic history educational goals
career goals
-

AP Class Information



AP Classes:

- Take AP Standardized Exam
 - Pay for the AP Exam is required
 - Required Scores are needed to be awarded credit - depends on institution
 - To find out exam equivalency go to:
aztransfer.com
-

Dual Enrollment Classes

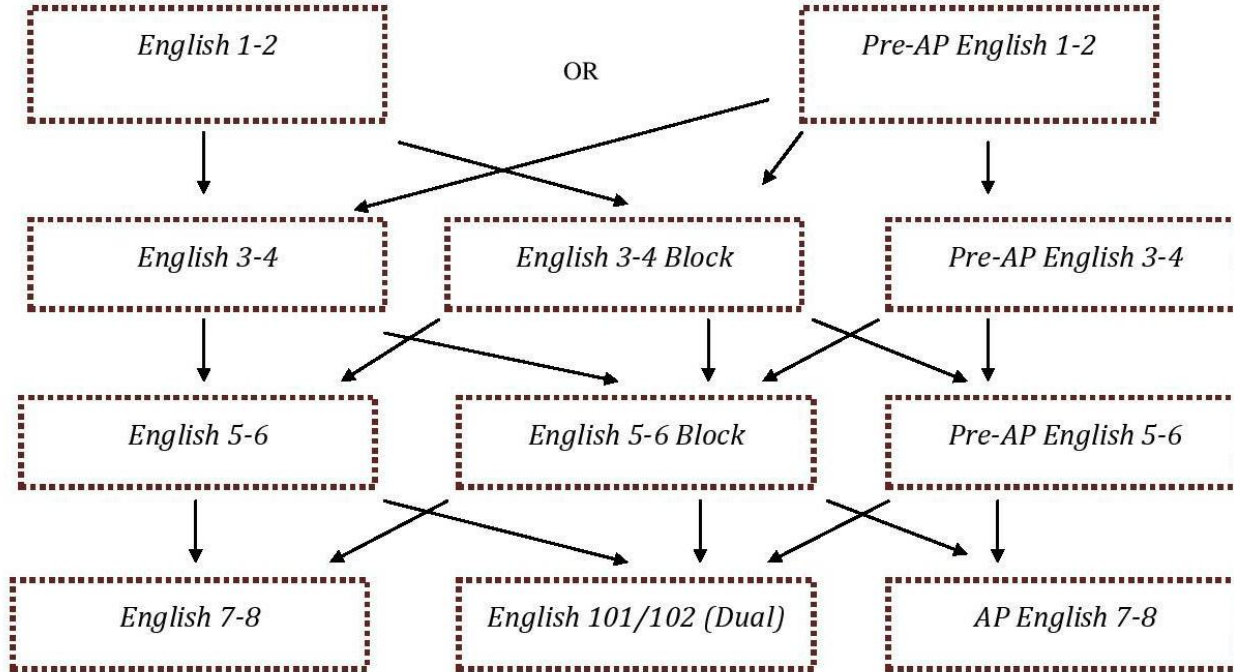
- College credit is earned with a C grade or higher.
 - Must qualify with Compass Testing
 - Must be accepted to Yavapai Community College
 - To determine course equivalency go to: aztransfer.com
-

PUSD ENGLISH PATHWAYS (9-12)

2015-2016 School Year

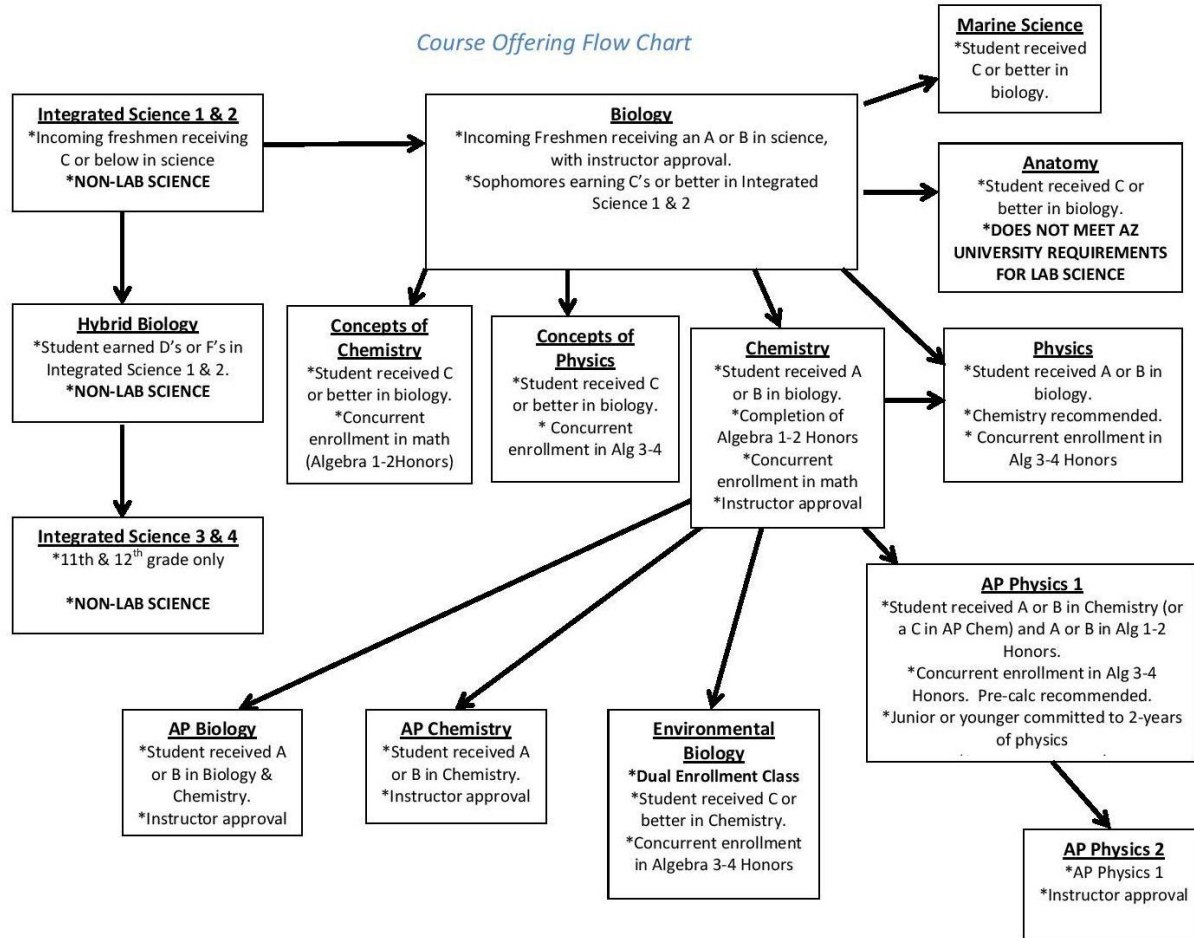
Course Offering Flow Chart

(General Guidelines: there are always going to be special student circumstances that this does not work for.)



PUSD SCIENCE PATHWAYS (9-12)
2015-2016 School Year

Course Offering Flow Chart

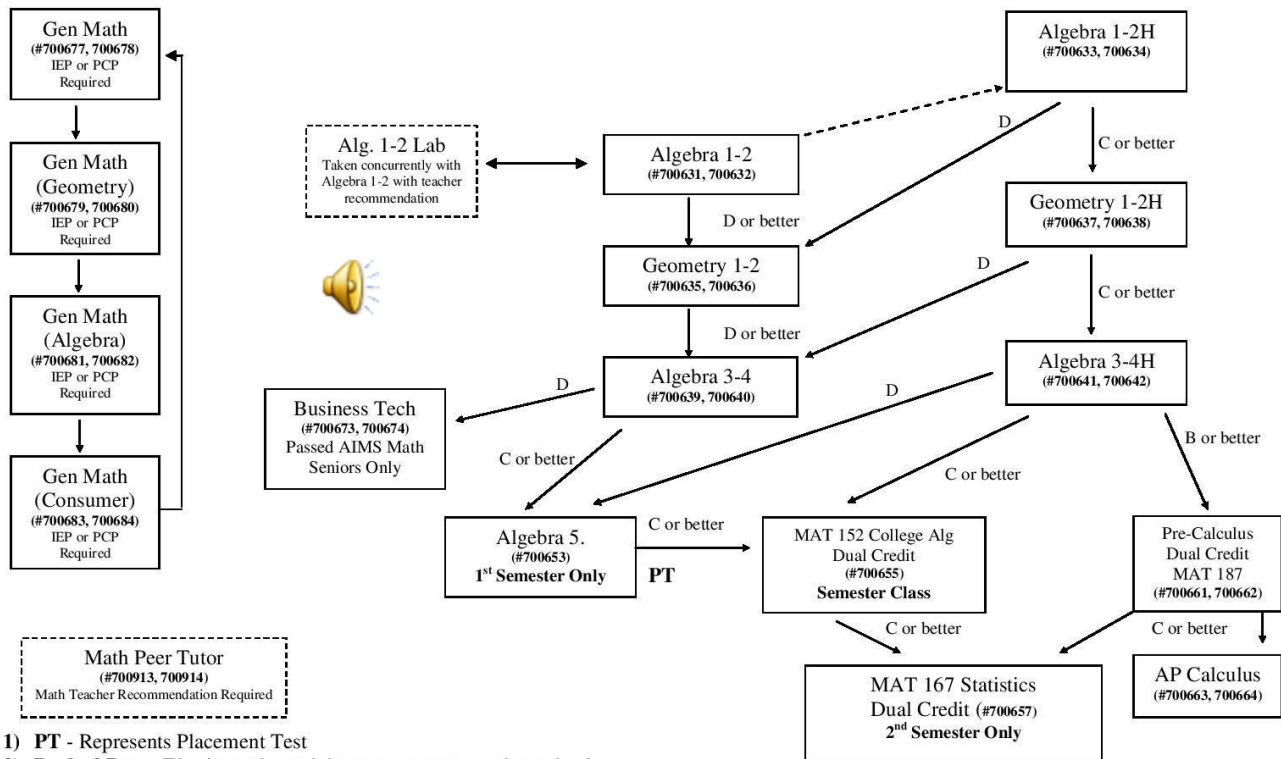


PHS Math Department (updated 3-16-2015)

2015-2016 School Year

Course Offering Flow Chart

(General Guidelines: There are always going to be special student circumstances that this does not work for.)



- 1) **PT** - Represents Placement Test
- 2) **Dashed Box** – Elective only, and does not count towards graduation.
- 3) **Dotted Line** represents a **required** teacher recommendation.
- 4) **Yavapai College** will only honor credit in ONE of the courses:
MAT 152- College Algebra or MAT 187-Pre-Calculus.
- 5) **Any level change must have department chair approval**

Other Information:

If a student fails in mathematics, the student will automatically have to take extra math courses and most likely through PHS Online. This would include if they fail first semester, taking the 1st semester of the course failed through PHS Online while they are then dropped to a lower level math course.

If a student fails 2nd semester but not first, then he/she would make up the 2nd semester during the summer, or first semester through PHS Online.



Course Specific Information:

We are currently developing the committee that will determine the criteria and components of the personal curriculum plan as per state law. This is only specific to math and the 4 years of math requirement that includes Algebra 2 (Algebra 3-4 at PHS).

All courses (excluding the General Math courses) require a graphing calculator (TI-83, TI-83+, or TI-84+).

The Alg 1-2, Geo 1-2, and Alg 3-4 courses count for PHS and AZ graduation requirements but does NOT meet the university requirements. However, if a student follows the course work through Algebra 5 and then tests into College Algebra, this is a community college credit in mathematics and can be used to fulfill the university math credit requirement.

The Honors courses are for those students intending on graduating and then going on to a college degree program, most likely university bound right after high school.

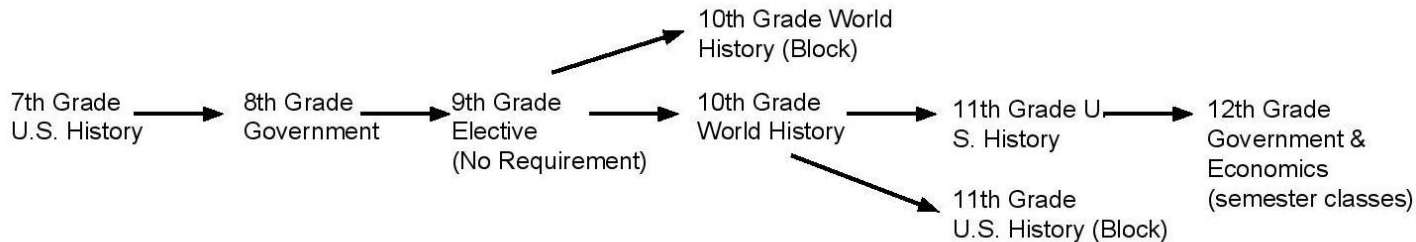
Business Tech Mathematics will count as a 4th year of math credit but is typically for students who are not pursuing a college degree.

Algebra 5 and then College Algebra are taken consecutively. The 2nd Semester College Algebra class is mainly intended for those students who are in 1st semester Algebra 5.

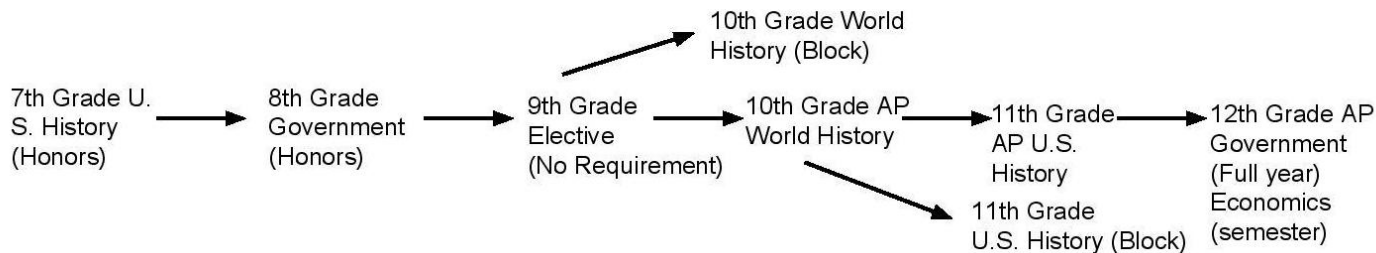
The dual credit courses MAT 152 and MAT 187 have Algebra 3-4Honors as the prerequisite for enrollment per Yavapai College Policy.

MAT 152 and MAT 187 Pre-calc are both acceptable prerequisites for MAT 167 Statistics.

Social Studies Pathways 2015-2016



Honors Pathway Advanced Placement



Social Studies Electives (not listed):

- AP Psychology (Juniors and Seniors)
- Introduction to Law (Sophomores (by recommendation), Juniors and Seniors)
- Geography (Online)
- Humanities (Online)

JTED Classes

- JTED Pre-Engineering/ Robotics
- JTED Welding Technologies
- JTED Transportation Technologies
- JTED Aviation Technology
- JTED Electrical Line Work
- JTED Business/Management and Administrative Services
- JTED Accounting 1 and 2
- JTED Medical Professions
- JTED Nursing Services
- JTED Sports Medicine





Questions
